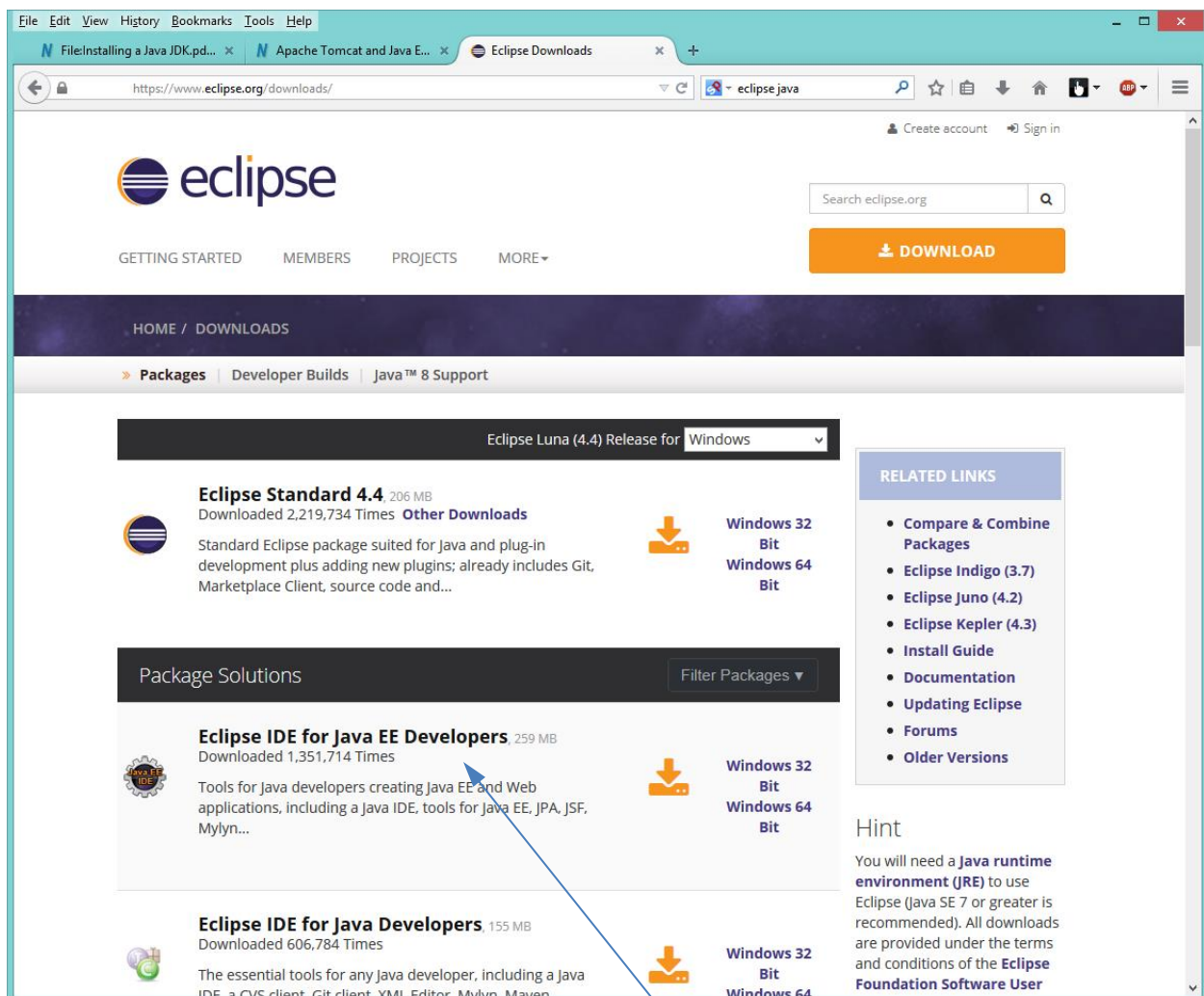


Installing Eclipse

Step 1:

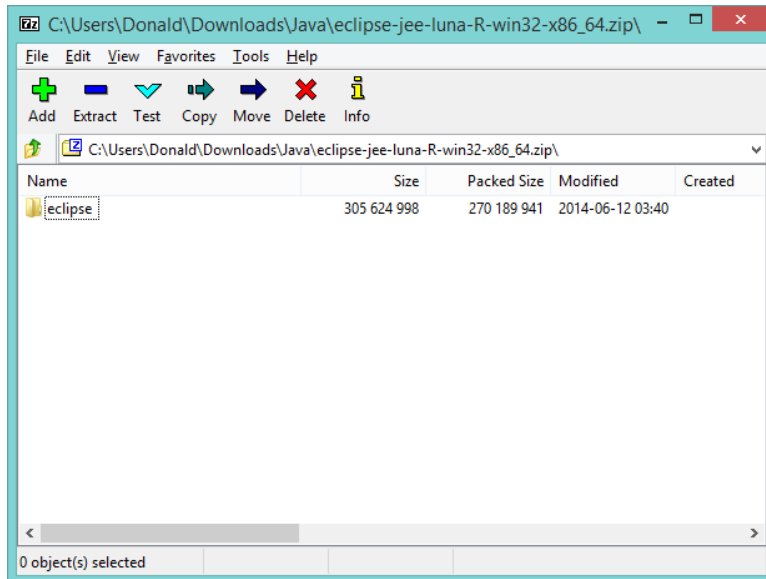
Go to the Eclipse.org website and download the Eclipse IDE for Java EE Developers. Java EE gives the ability to develop web applications. The site download page looks like the following. Note that the site will change as further versions of Eclipse become available. Get the version of the IDE that matches the JDK that you have installed, i.e. 64 bit or 32 bit. Remember the download directory so that the zip file can be found so that it can be extracted.



Get the EE version

Step 2:

Find the zip file and extract it into a folder in a location where you can easily find the Eclipse files. Eclipse comes as an archive that is extracted and not as an executable. One of the many zip file extractors is shown below:

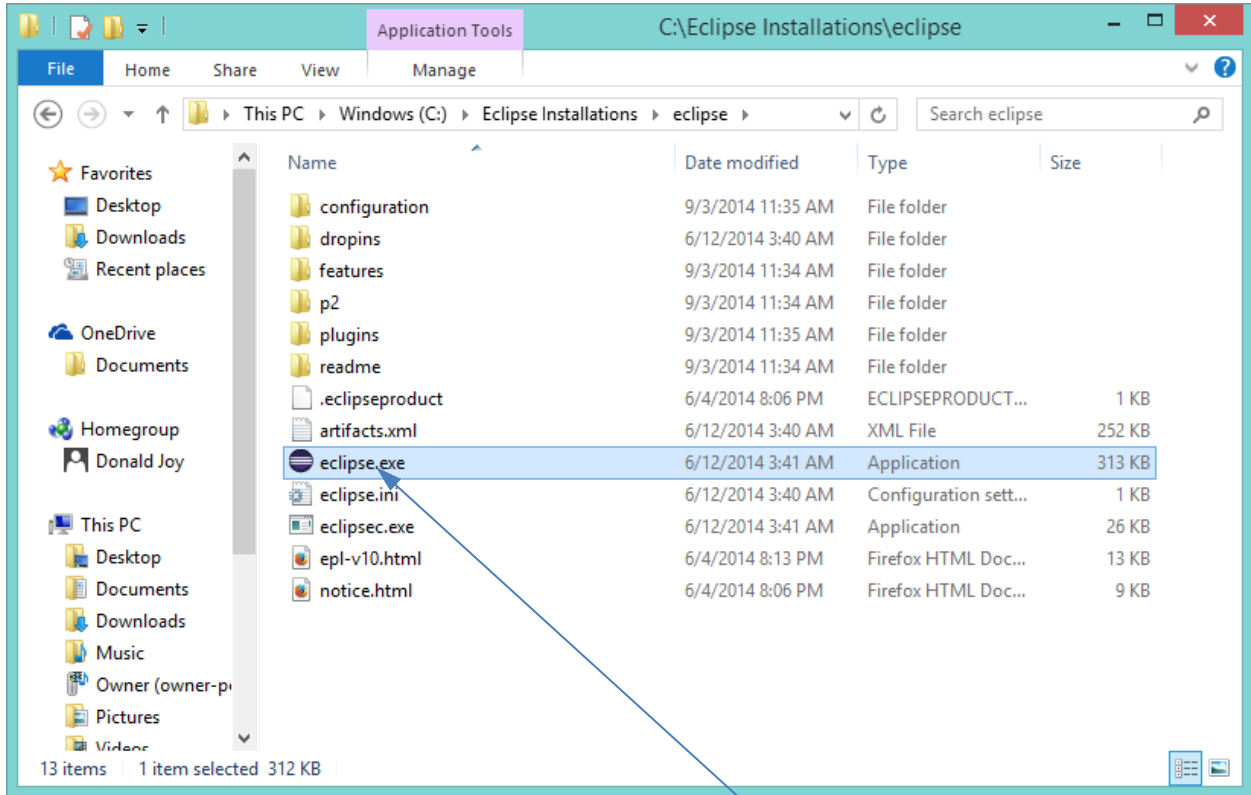


Notes:

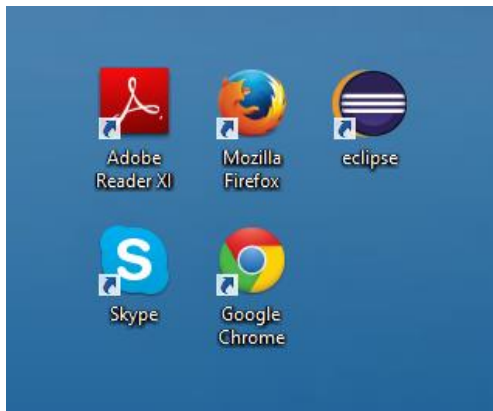
1. Normally developers make a folder in a location that they prefer. In some organizations the folder will be determined by common agreement among developers, by existing environment documentation, or by the group overseeing development. It is good to have a common location for all developers. In some organizations installation of tools is done by automated processes and not by developers. Development of automation for tools installation is quite complex and unnecessary unless the organization has critical needs due to environment security (such as Healthcare software), or regulation and laws that govern the development environment.
2. Some developers have several installations of Eclipse within their disk space and use them for different purposes. For example one may be a Java EE installation and another might be a Java SE installation. They may also have Eclipse for programming in C++ or for Php.

Step 3

Find your installation of Eclipse in the file system and make a shortcut to the executable so that you can easily start Eclipse from the desktop (assuming you are using Windows).



Send Shortcut to Desktop



Here is a snapshot of a part of the desktop showing Eclipse and some other shortcuts. Note that the Eclipse shortcut has been renamed. There can be several Eclipse shortcuts with different names that point to Eclipse in various varying folders.

Step 4

Start Eclipse and explore the IDE by double clicking on the shortcut.

