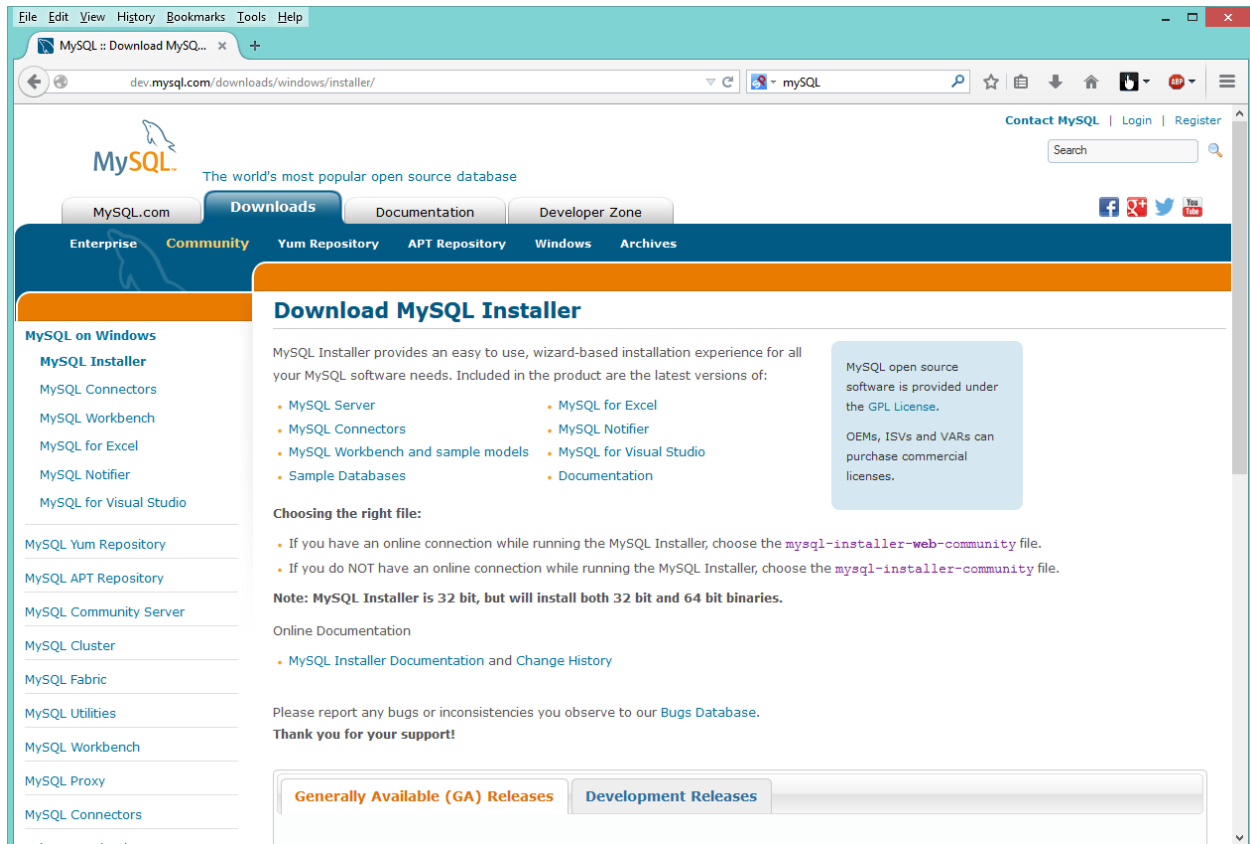
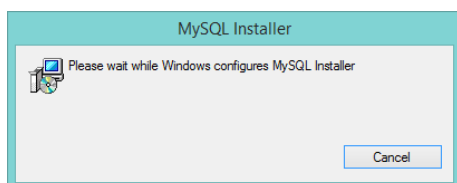


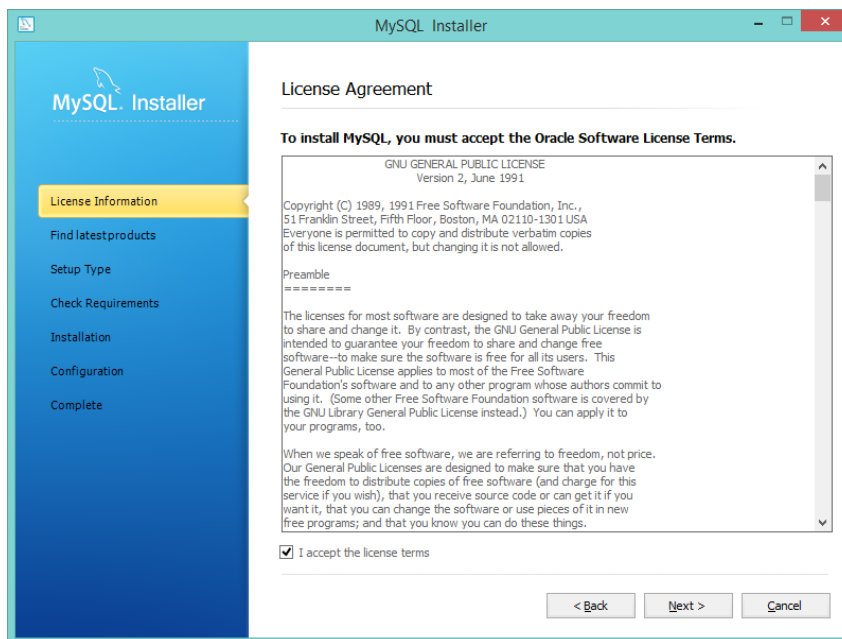
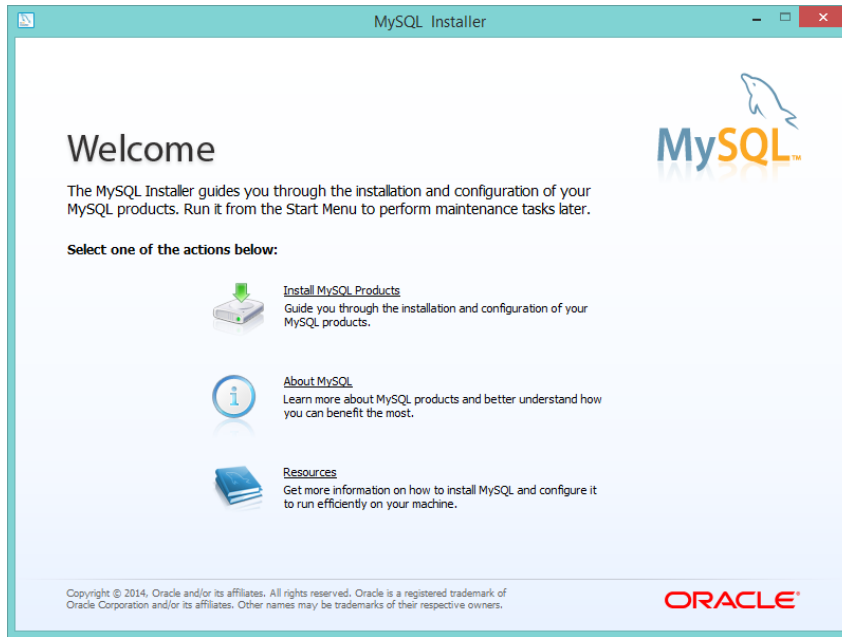
Installing MySQL

Go the website for MySQL, www.mysql.com, and get the Windows Installer for the Community Server version. It is under Downloads on the top tabs. The download page is shown below.

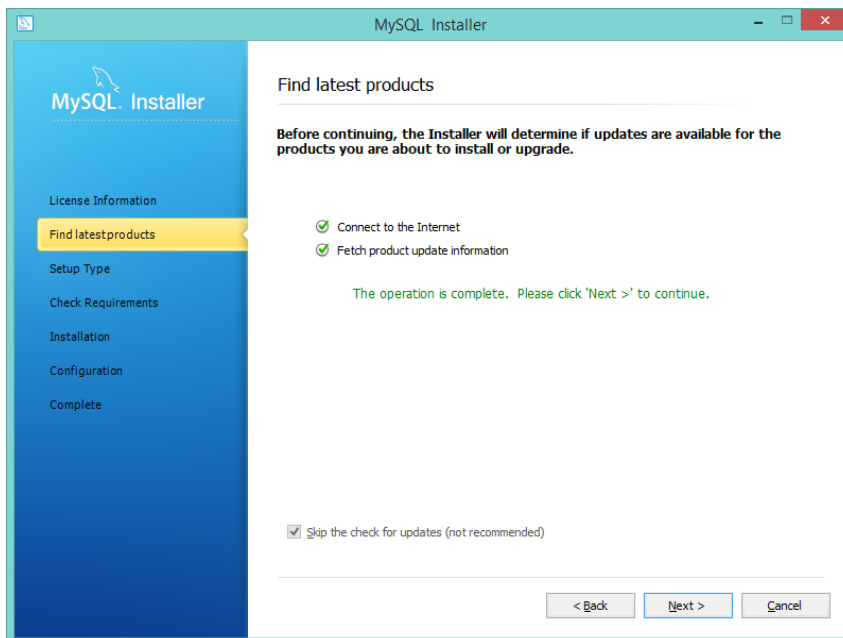
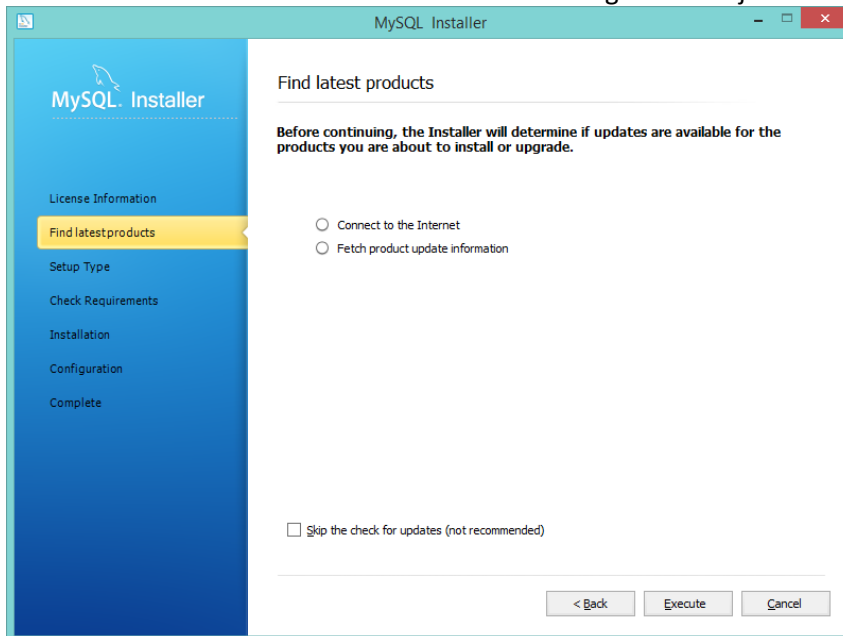


Start the installation

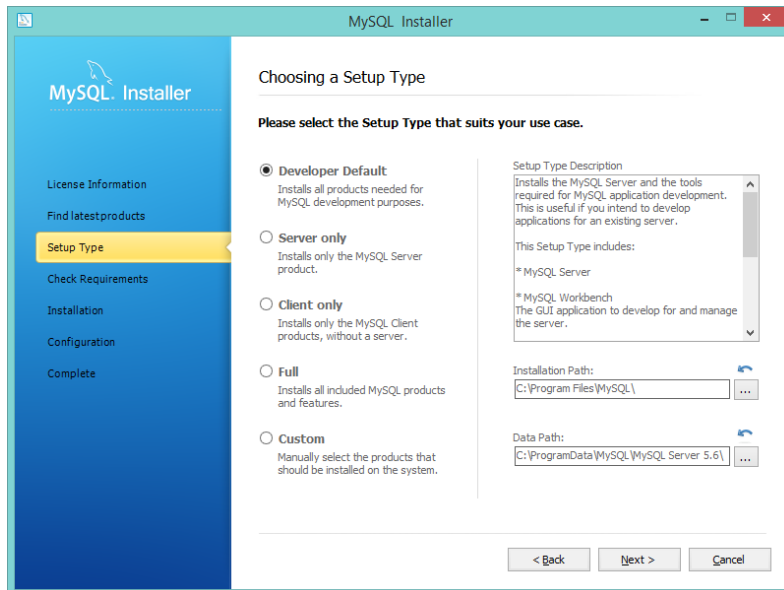




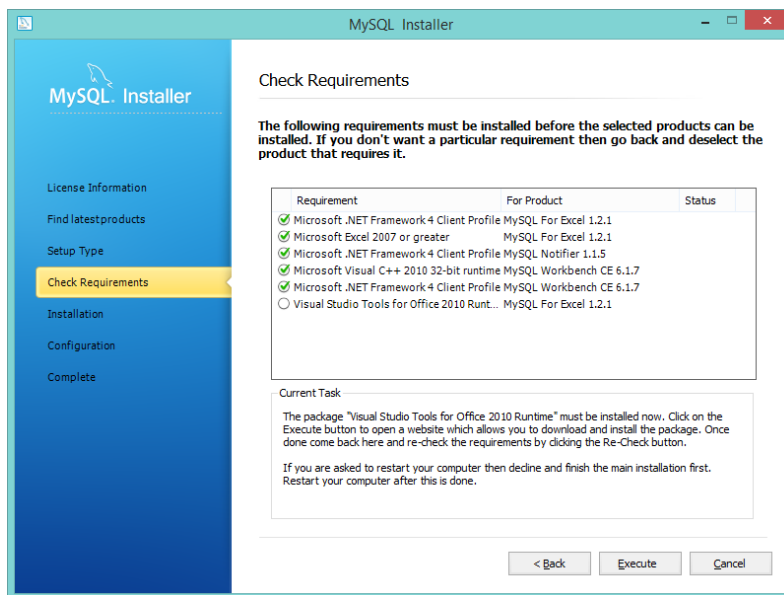
The installer checks the radio buttons on the Dialog below so just click Execute



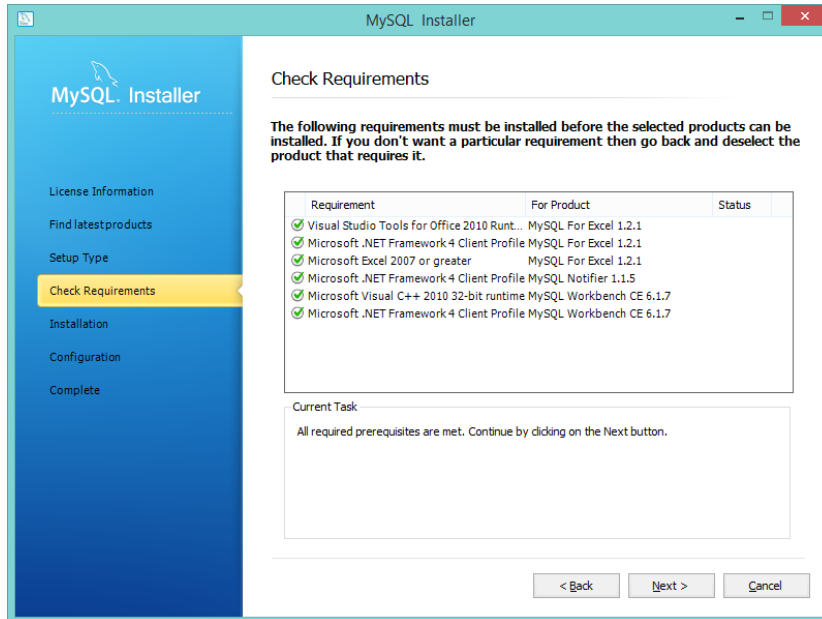
It is easier to just install the Developer Default



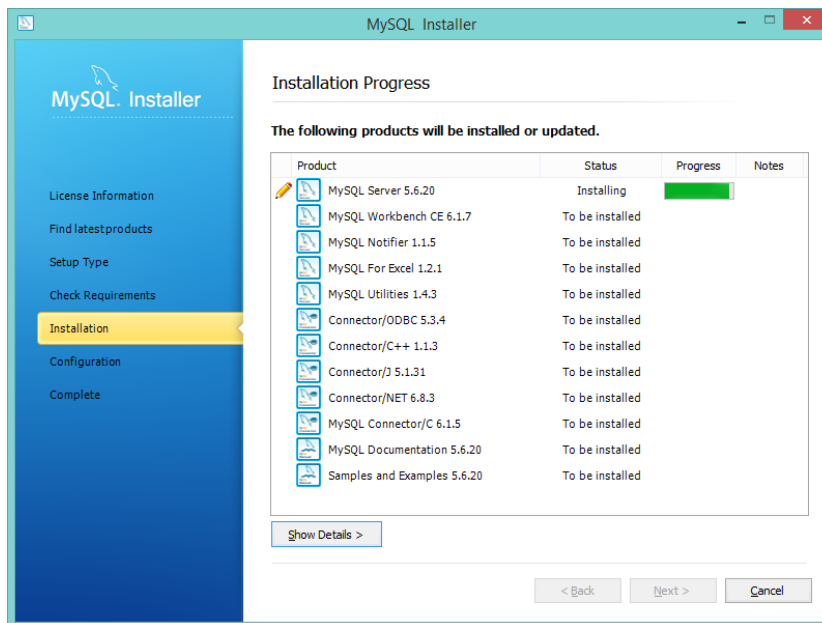
Clicking on Execute will go to the installation for installing some Microsoft products, install these.



A confirmation will be given that required prerequisites are met. Click Next

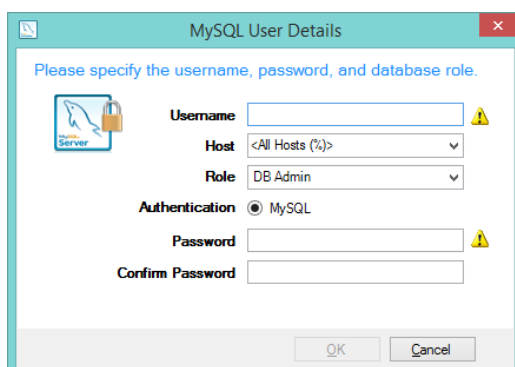
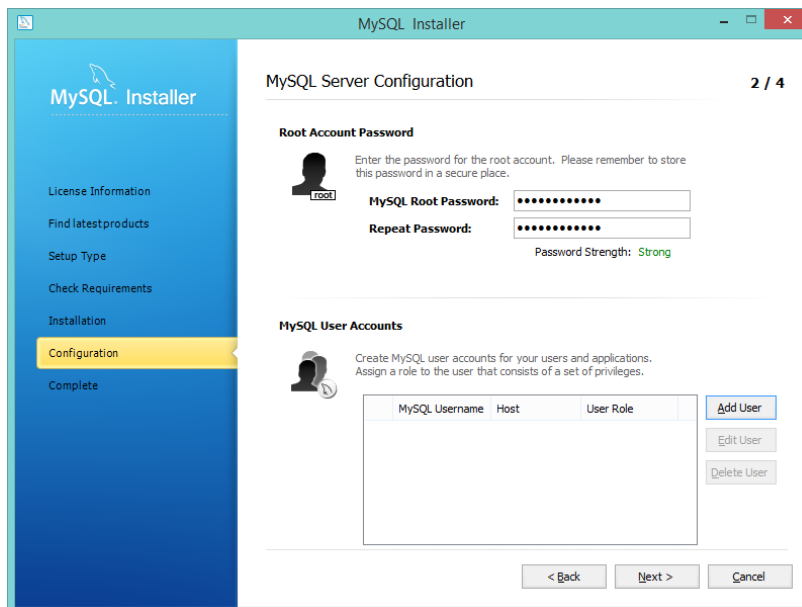
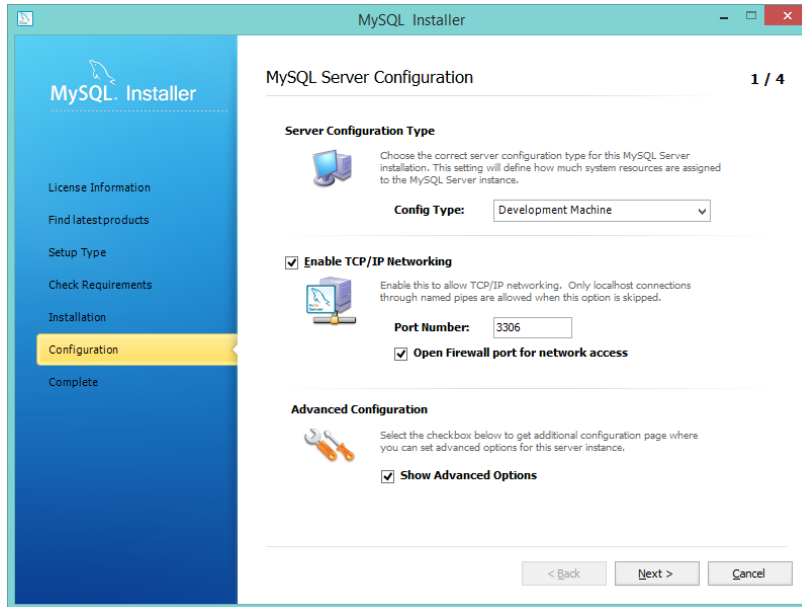


The installation will now occur.

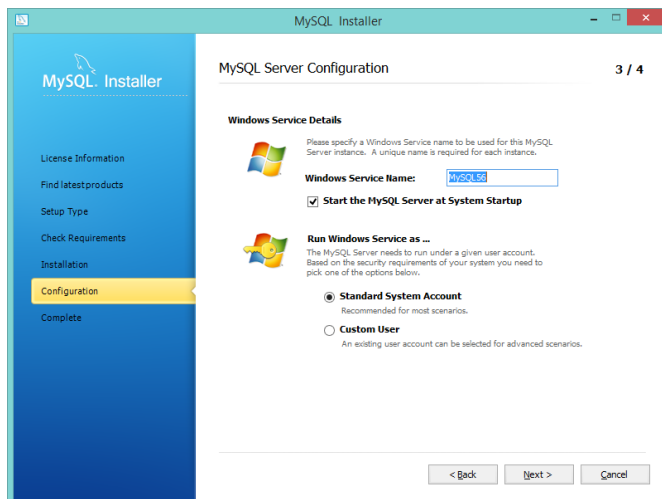


Click next when done goes to the initialization options

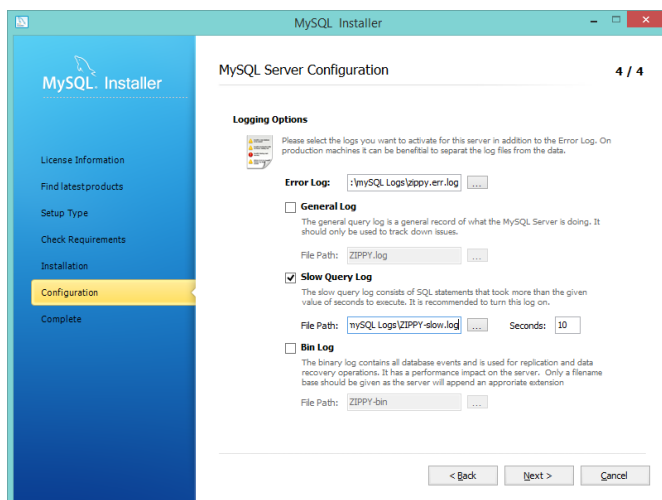
Checking off advanced options allows a password on the root account and the ability to add users



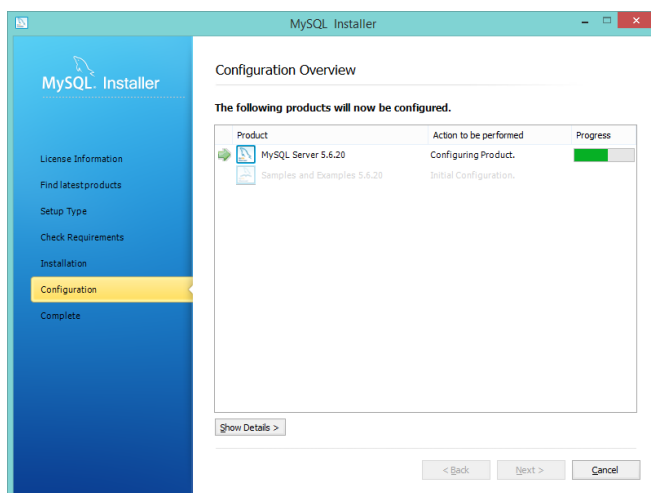
Add a user called nobleprog with a password of Nobleprog123\$. We will use this to define our datasource. Make the user a DB Admin. Normally the user in the code would not have full permissions on the database.



Leave this data as it is, it will suffice for the exercises being done.

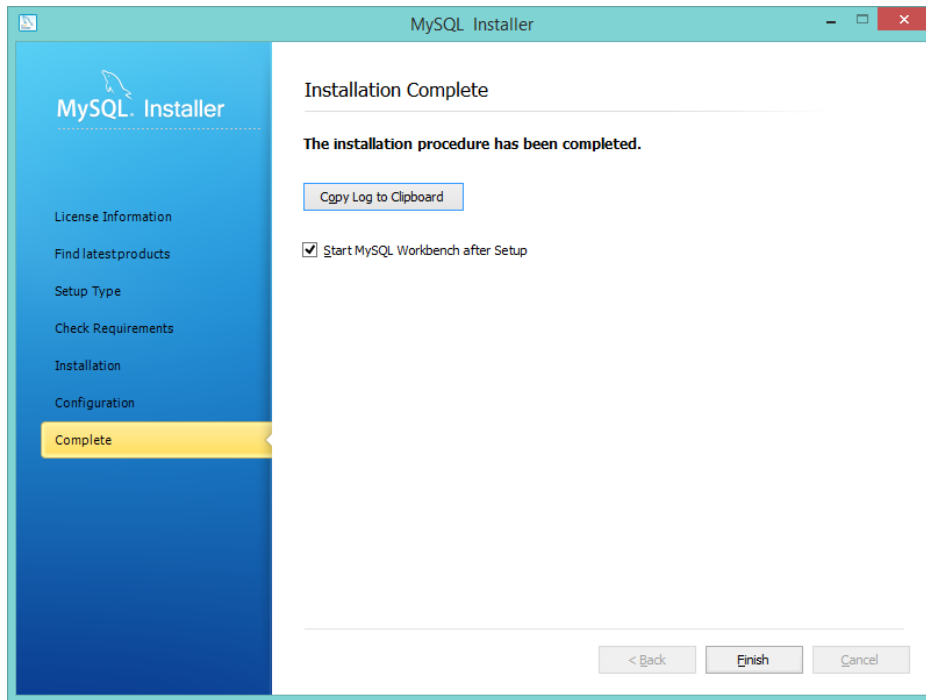


create a directory that can be found easily for the log files and choose them for this dialog.



MySQL will now be configured

MySQL is now installed



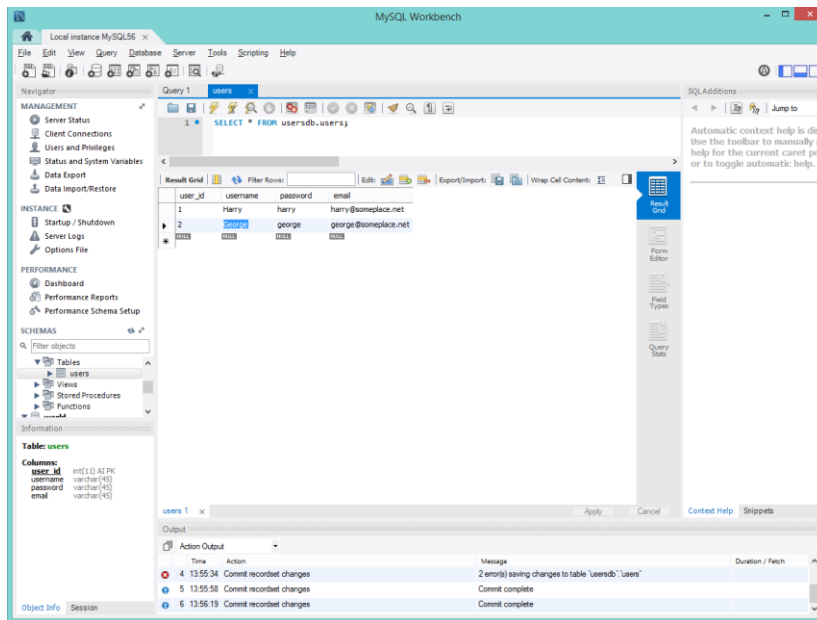
Open the MySQL Workbench if it is not already open. Create a new database in MySQL and a new table in the database using the following script in the Workbench Query tool.

```
create database usersdb;

use usersdb;

CREATE TABLE `users` (
  `user_id` int(11) NOT NULL AUTO_INCREMENT,
  `username` varchar(45) NOT NULL,
  `password` varchar(45) NOT NULL,
  `email` varchar(45) NOT NULL,
  PRIMARY KEY (`user_id`)
);
```

Populate the table with some data. Right click on the table name in the usersdb database and choose “Select Rows – Limit 1000” from the popup menu. You can enter data into the table and click Apply at the bottom of the table to populate the data into the database with insert statements as shown in the image below.



Once the data is in the database the Workbench can be closed or it can be used to explore MySQL through the various example databases that were installed into MySQL in the installation process.